



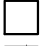

| Pilares | | | |
|---------|------------|---------------|------------|
| Nome | Seção (cm) | Elevação (cm) | Nível (cm) |
| P9 | 24x55 | 0 | 674 |
| P10 | 24x55 | 0 | 674 |
| P11 | 18x55 | 0 | 674 |
| P12 | 18x35 | 0 | 674 |
| P13 | 24x55 | 0 | 674 |
| P14 | 18x55 | 0 | 674 |
| P15 | 18x35 | 0 | 674 |
| P16 | 24x50 | 0 | 674 |
| P17 | 14x35 | 0 | 674 |
| P18 | 24x55 | 0 | 674 |
| P19 | 24x50 | 20 | 694 |
| P20 | 14x40 | 0 | 674 |
| P21 | 24x55 | 0 | 674 |
| P22 | 18x55 | 0 | 674 |
| P23 | 18x35 | 0 | 674 |
| P27 | 24x35 | 0 | 674 |
| P28 | 24x55 | 0 | 674 |
| P29 | 18x55 | 0 | 674 |
| P30 | 18x50 | 0 | 674 |
| P31 | 24x35 | 0 | 674 |
| P32 | 24x35 | 0 | 674 |
| P34 | 18x20 | 0 | 674 |
| P35 | 18x20 | 0 | 674 |
| P36 | 18x20 | 0 | 674 |
| P37 | 18x20 | 0 | 674 |
| P38 | 18x20 | 0 | 674 |

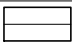

| Vigas | | | |
|-------|------------|---------------|------------|
| Nome | Seção (cm) | Elevação (cm) | Nível (cm) |
| V1 | 14x50 | 0 | 674 |
| V2 | 14x40 | 0 | 674 |
| V3 | 14x50 | 37 | 711 |
| V4 | 18x40 | 0 | 674 |
| V5 | 14x30 | 17 | 691 |
| V6 | 14x30 | 0 | 674 |
| V7 | 14x30 | 0 | 674 |
| V8 | 14x30 | 0 | 674 |
| V9 | 14x30 | 17 | 691 |
| V10 | 18x40 | 27 | 701 |
| V11 | 14x50 | 0 | 674 |
| V12 | 14x30 | 0 | 674 |
| V13 | 14x50 | 0 | 674 |
| V14 | 18x40 | 0 | 674 |
| V15 | 14x30 | 0 | 674 |
| V16 | 14x50 | 37 | 711 |
| V17 | 14x30 | 0 | 674 |
| V18 | 18x40 | 0 | 674 |
| V19 | 14x30 | 0 | 674 |
| V20 | 18x40 | 0 | 674 |
| V21 | 14x30 | 0 | 674 |
| V22 | 18x40 | 0 | 674 |
| V23 | 14x30 | 0 | 674 |

| Lajes | | | | | | | | |
|-------|--------------|-------------|---------------|------------|-----------------------|---------------------|-----------|------------|
| Dados | | | | | | Sobrecarga (kgf/m²) | | |
| Nome | Tipo | Altura (cm) | Elevação (cm) | Nível (cm) | Peso próprio (kgf/m²) | Adicional | Acidental | Localizada |
| L1 | Treliçada 1D | 13 | 0 | 674 | 293 | 154 | 10 | - |
| L2 | Treliçada 1D | 13 | 0 | 674 | 293 | 154 | 10 | - |
| L3 | Treliçada 1D | 13 | 0 | 674 | 293 | 154 | 10 | - |
| L4 | Pré-moldada | 13 | 0 | 674 | 283 | 154 | 10 | - |
| L5 | Treliçada 1D | 13 | 0 | 674 | 293 | 154 | 10 | sim |
| L6 | Treliçada 1D | 13 | 0 | 674 | 293 | 154 | 10 | sim |
| L7 | Pré-moldada | 13 | 0 | 674 | 283 | 154 | 10 | sim |
| L8 | Treliçada 1D | 13 | 0 | 674 | 283 | 154 | 10 | sim |
| L9 | Pré-moldada | 13 | 0 | 674 | 283 | 154 | 10 | - |
| L10 | Treliçada 1D | 13 | 0 | 674 | 283 | 154 | 10 | - |
| L11 | Treliçada 1D | 13 | 0 | 674 | 283 | 154 | 10 | - |
| L12 | Treliçada 1D | 13 | 0 | 674 | 294 | 154 | 10 | - |
| L13 | Treliçada 1D | 13 | 0 | 674 | 294 | 154 | 10 | - |
| L14 | Pré-moldada | 13 | 0 | 674 | 283 | 154 | 10 | - |

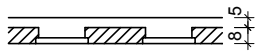
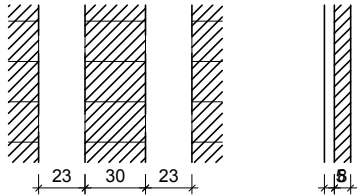
| Características dos materiais | |
|-------------------------------|------------------|
| fck (kgf/cm²) | Ecs (kgf/cm²) |
| 250 | 241500 |

| Blocos de enchimento | | | | | | |
|----------------------|-----------------|----------|---------------|----|----|------------|
| Detalhe | Tipo | Nome | Dimensões(cm) | | | Quantidade |
| | | | hb | bx | by | |
| 1/2/3/4/5 | Lajota cerâmica | B8/30/20 | 8 | 30 | 20 | 1657 |

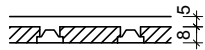
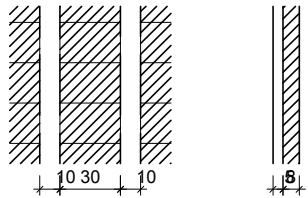
| Legenda dos pilares | |
|---|----------------------------|
|  | Pilar que morre |
|  | Pilar que passa |
|  | Pilar que nasce |
|  | Pilar com mudança de seção |

| Legenda das vigas e paredes | |
|---|-------------------------|
|  | Viga |
|  | Viga chata ou invertida |

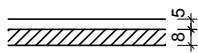
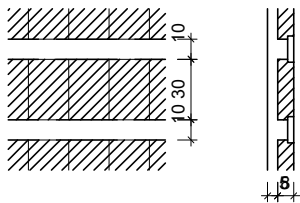
Detalhe 1 (esc. 1:30)



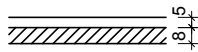
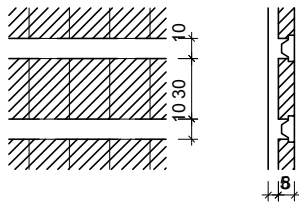
Detalhe 4 (esc. 1:30)



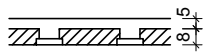
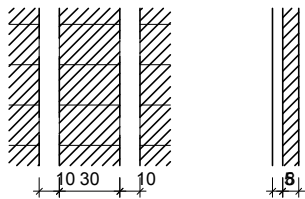
Detalhe 2 (esc. 1:30)



Detalhe 5 (esc. 1:30)

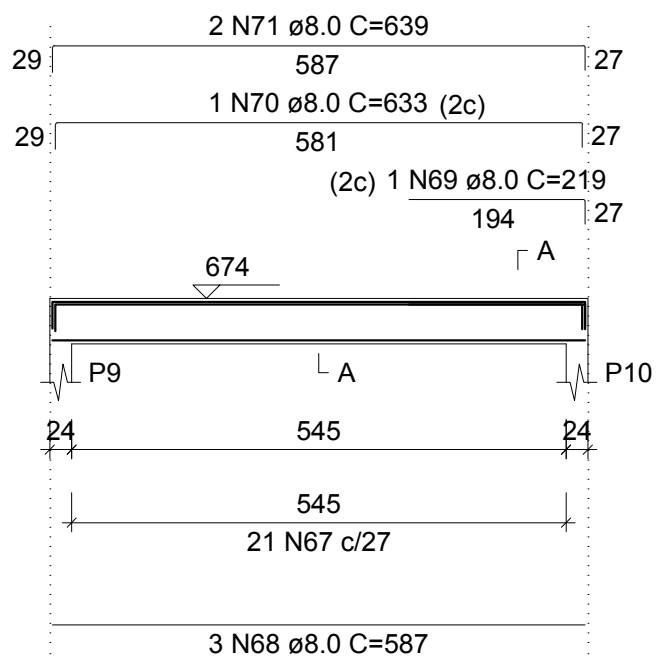


Detalhe 3 (esc. 1:30)

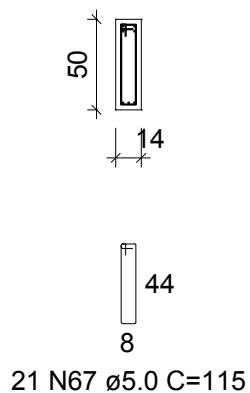


V1 (14 x 50)

ESC 1:100

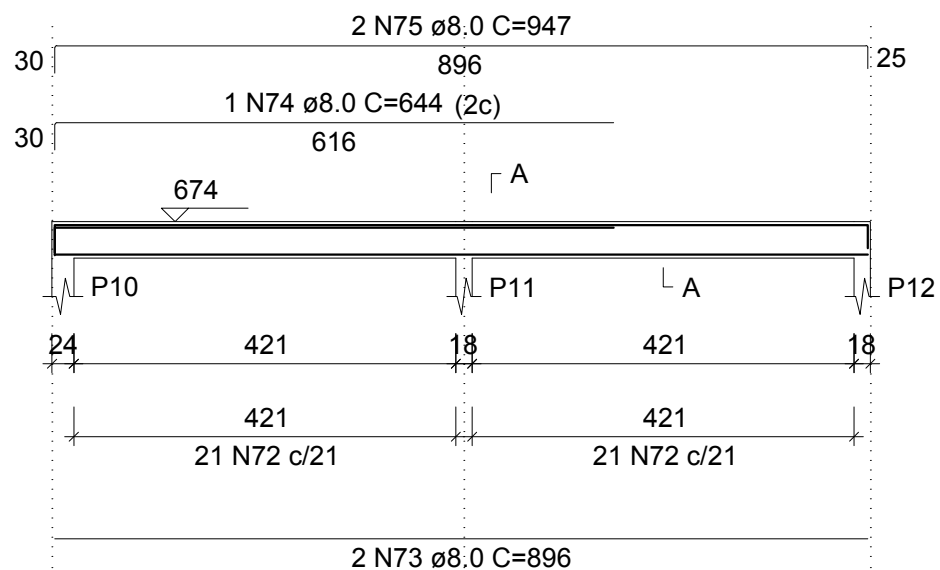


SEÇÃO A-A ESC 1:50

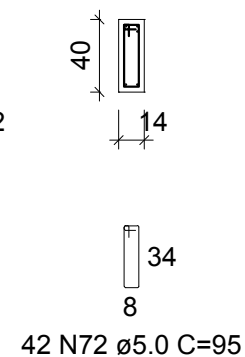


V2 (14 x 40)

ESC 1:100

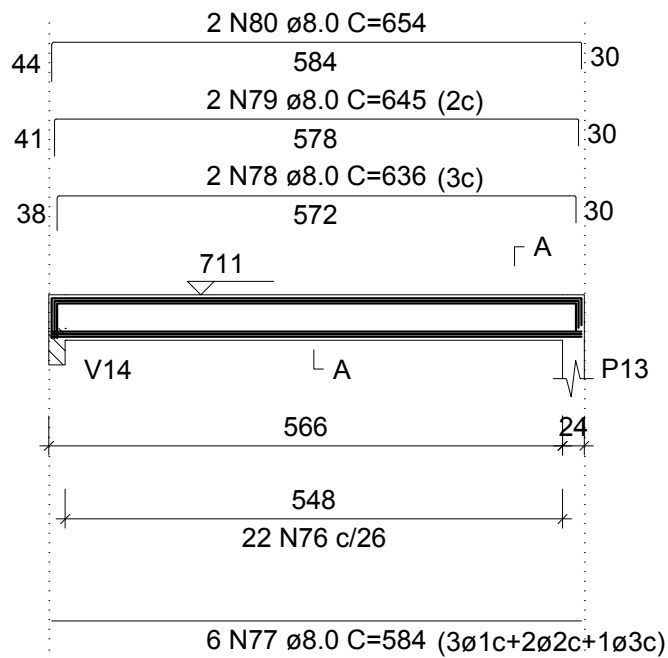


SEÇÃO A-A ESC 1:50

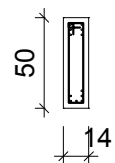


V3 (14 x 50)

ESC 1:100



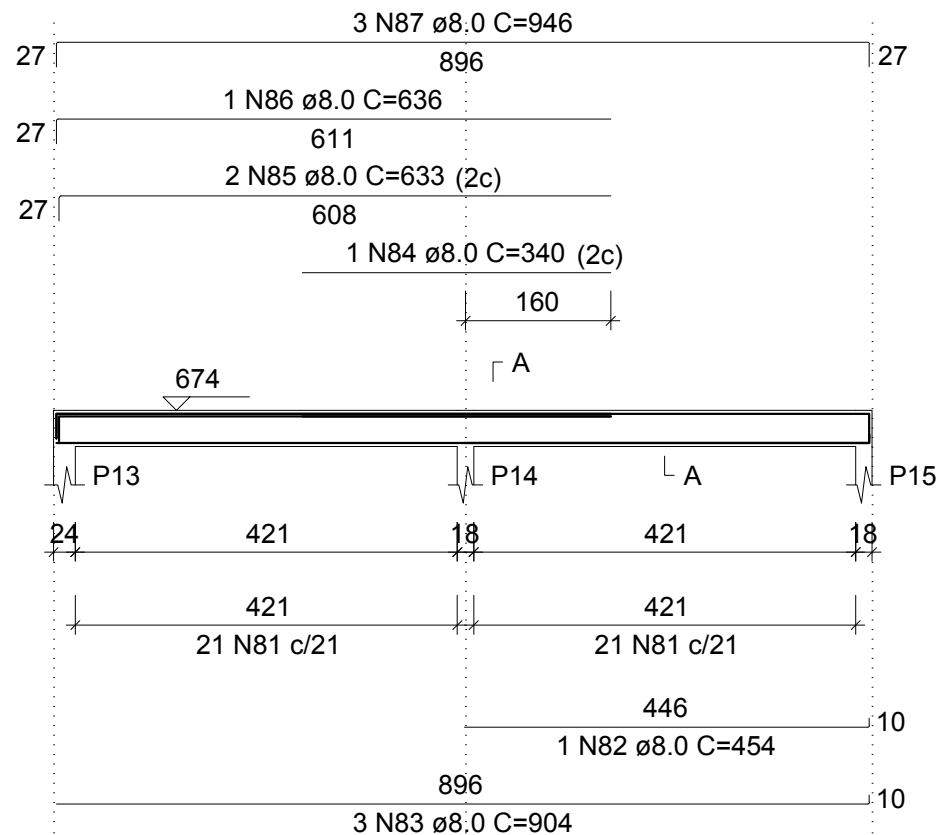
SEÇÃO A-A ESC 1:50



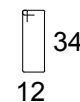
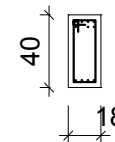
22 N76 \varnothing 5.0 C=115

V4 (18 x 40)

ESC 1:100



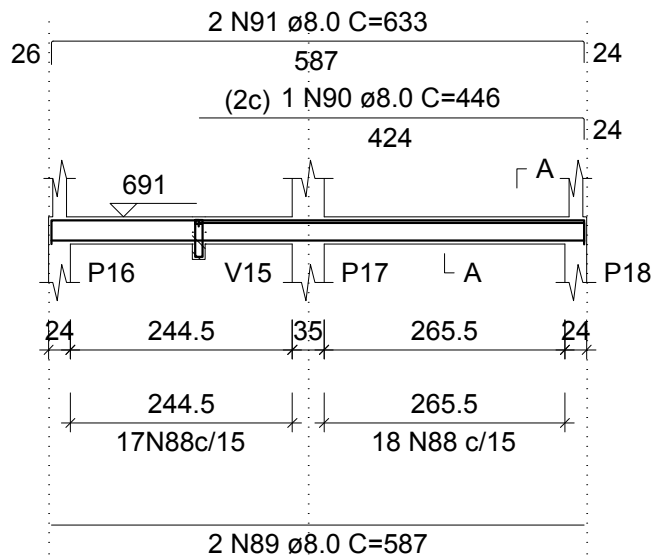
SEÇÃO A-A ESC 1:50



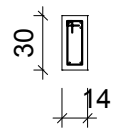
42 N81 \varnothing 5.0 C=10:

V5 (14 x 30)

ESC 1:100

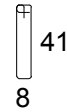


SEÇÃO A-A
ESC 1:50



35 N88 ø5.0 C=75

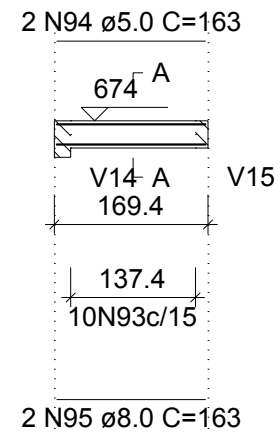
SUSPENSÃO V15
ESC 1:50



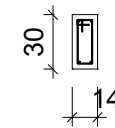
1 N92 ø8.0 C=110

V6 (14 x 30)

ESC 1:100

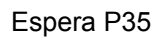


SEÇÃO A-A
ESC 1:50



10 N93 ø5.0 C=75

ESC 1:100



22 N96 ø5.0 C=75



20 68
4 N101 Ø10.0 C=86
27



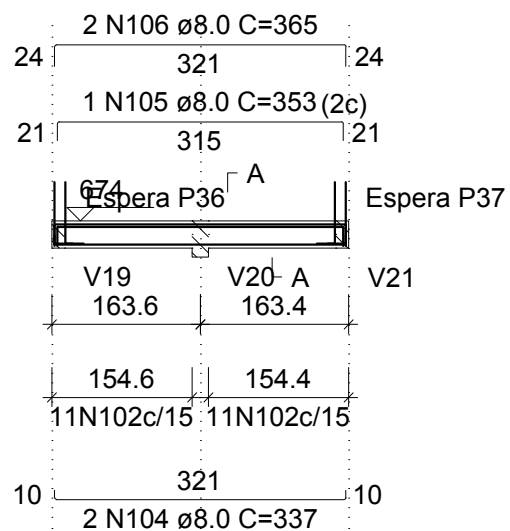
20 68
4 N101 Ø10.0 C=86
27



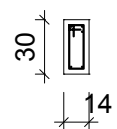
3 N97 Ø5.0 c/12 C=63 3 N97 Ø5.0 c/12 C=63

V8 (14 x 30)

ESC 1:100

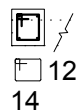
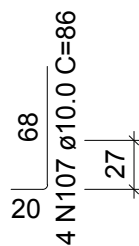


SEÇÃO A-A
ESC 1:50



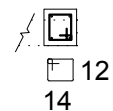
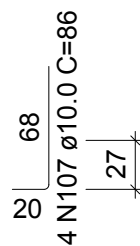
22 N102 $\varnothing 5.0$ C=75

ESPERA P36
ESC 1:50



3 N103 $\varnothing 5.0$ c/12 C=63

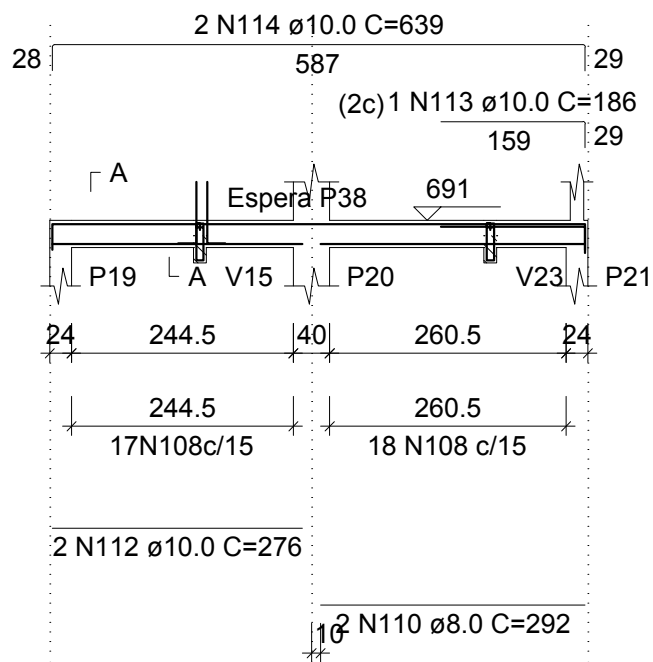
ESPERA P37
ESC 1:50



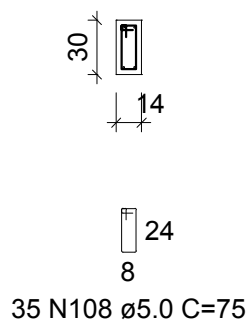
3 N103 $\varnothing 5.0$ c/12 C=63

V9 (14 x 30)

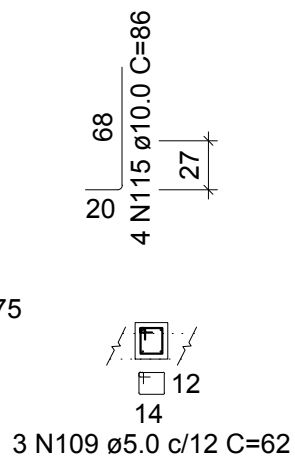
ESC 1:100



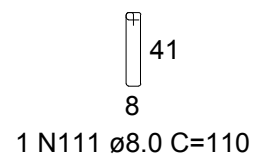
SEÇÃO A-A
ESC 1:50



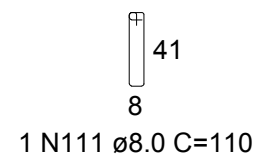
ESPERA P38
ESC 1:50



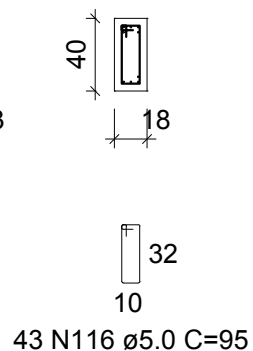
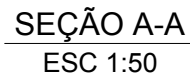
SUSPENSÃO V15
ESC 1:50



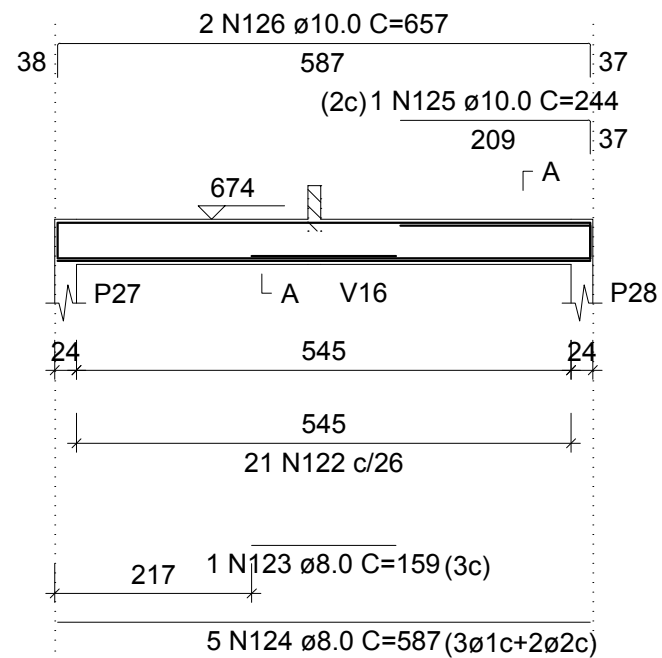
SUSPENSÃO V23
ESC 1:50



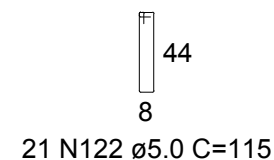
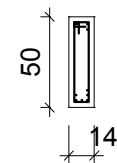
ESC 1:100



ESC 1:100

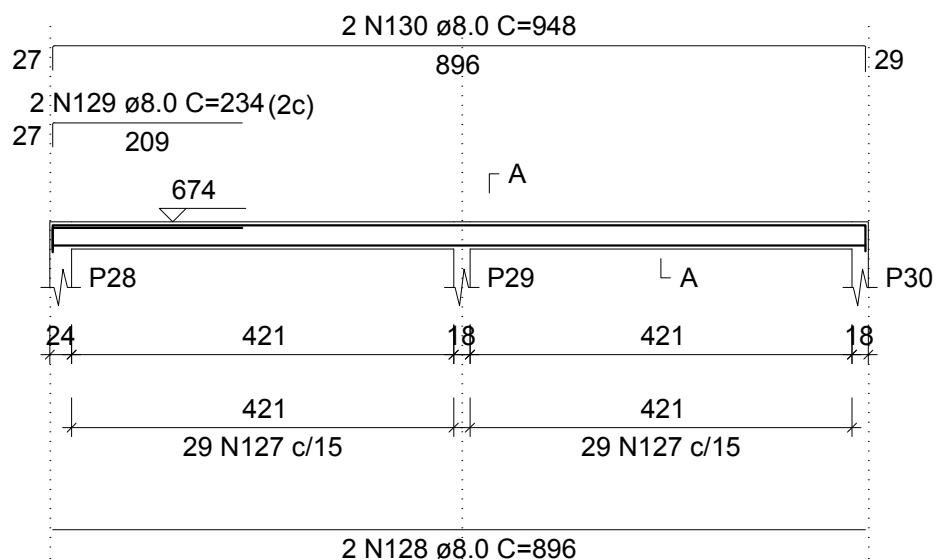


ESC 1:50

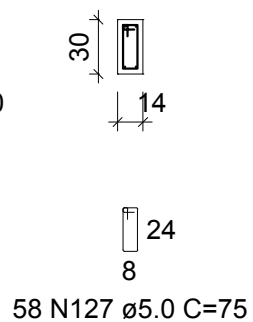


V12 (14 x 30)

ESC 1:100

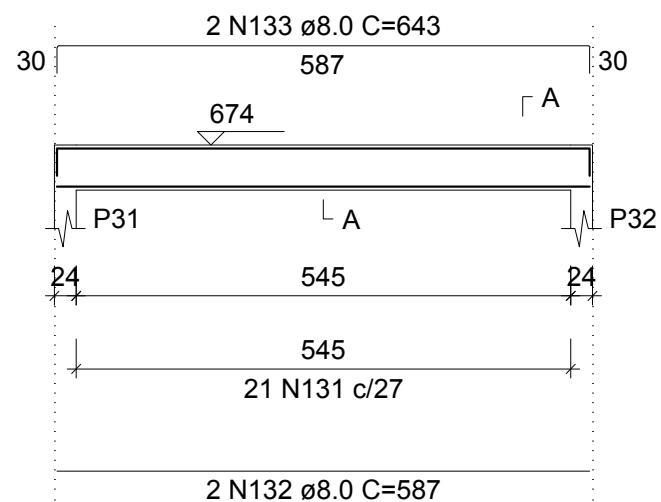


SEÇÃO A-A ESC 1:50

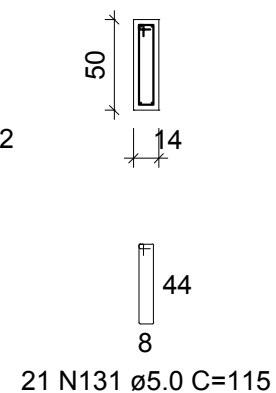


V13 (14 x 50)

ESC 1:100

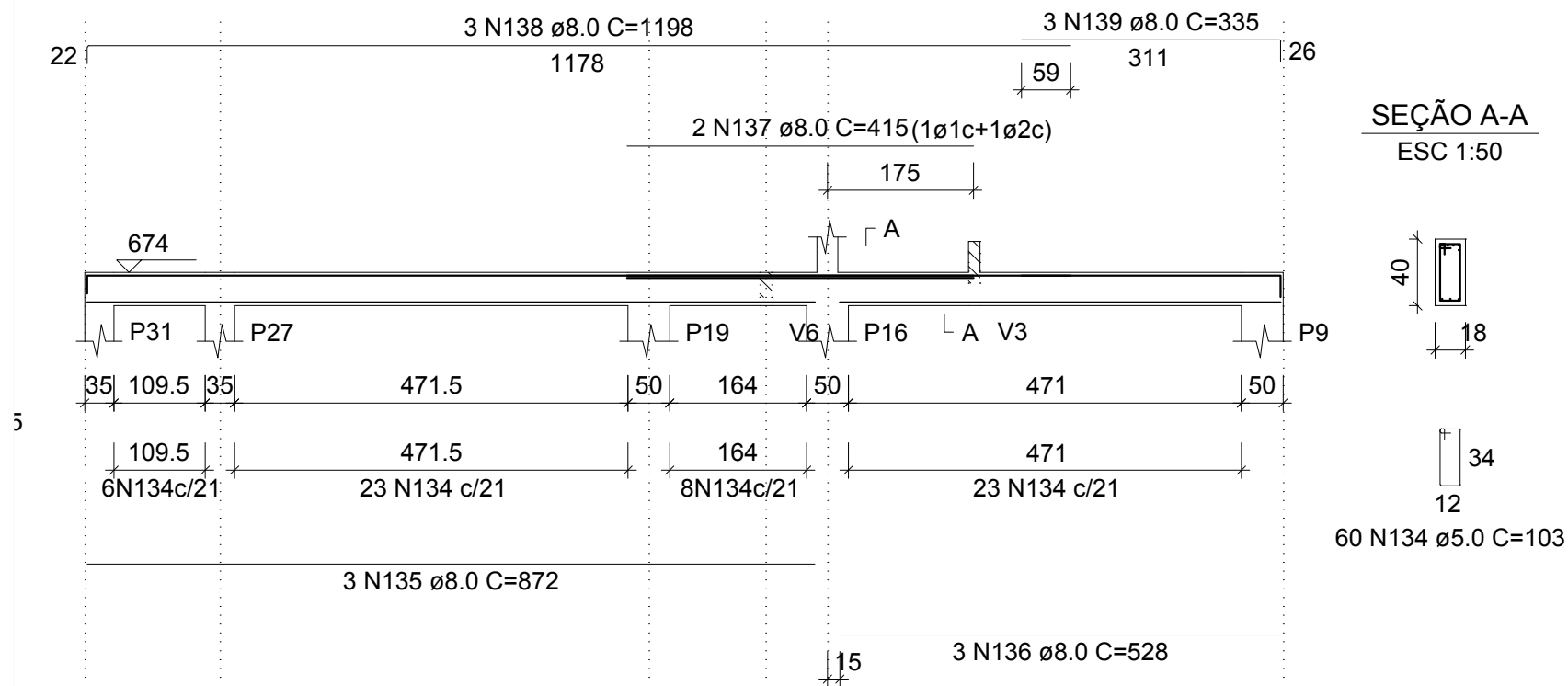


SEÇÃO A-A ESC 1:50



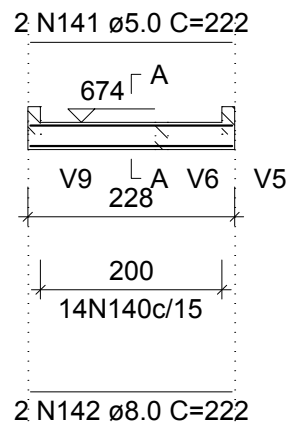
V14 (18 x 40)

ESC 1:100

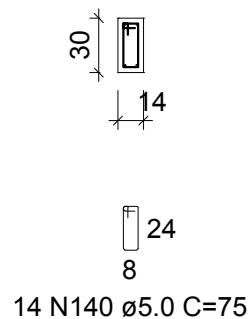


V15 (14 x 30)

ESC 1:100

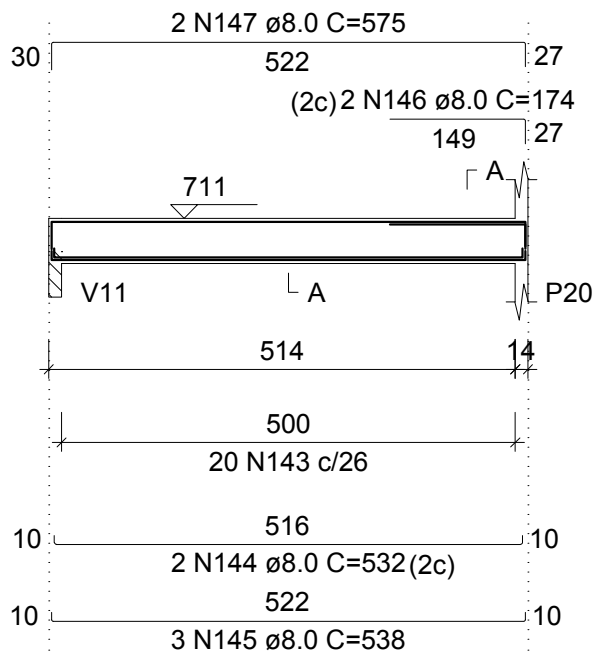


SEÇÃO A-A
ESC 1:50

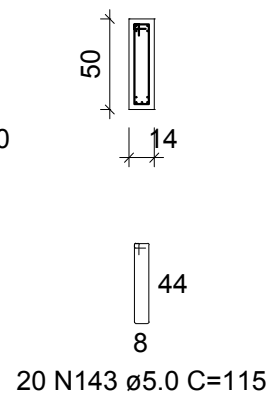


V16 (14 x 50)

ESC 1:100

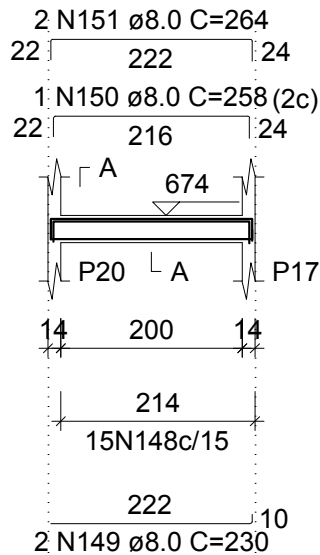


SEÇÃO A-A
ESC 1:50

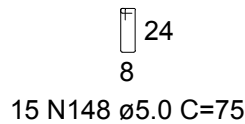
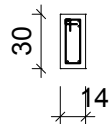


V17 (14 x 30)

ESC 1:100



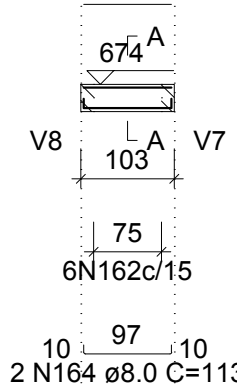
SEÇÃO A-A
ESC 1:50



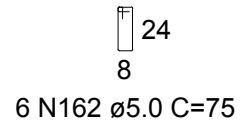
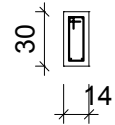
V19 (14 x 30)

ESC 1:100

2 N163 ø5.0 C=97



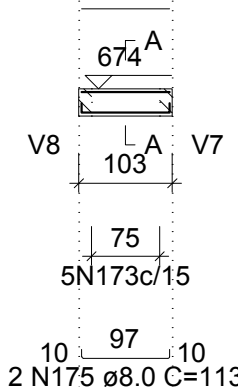
SEÇÃO A-A
ESC 1:50



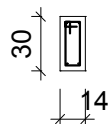
V21 (14 x 30)

ESC 1:100

2 N174 ø5.0 C=97



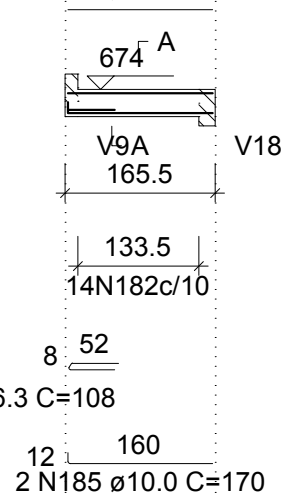
SEÇÃO A-A
ESC 1:50



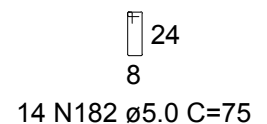
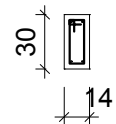
V23 (14 x 30)

ESC 1:100

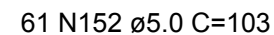
2 N184 ø10.0 C=160



SEÇÃO A-A
ESC 1:50

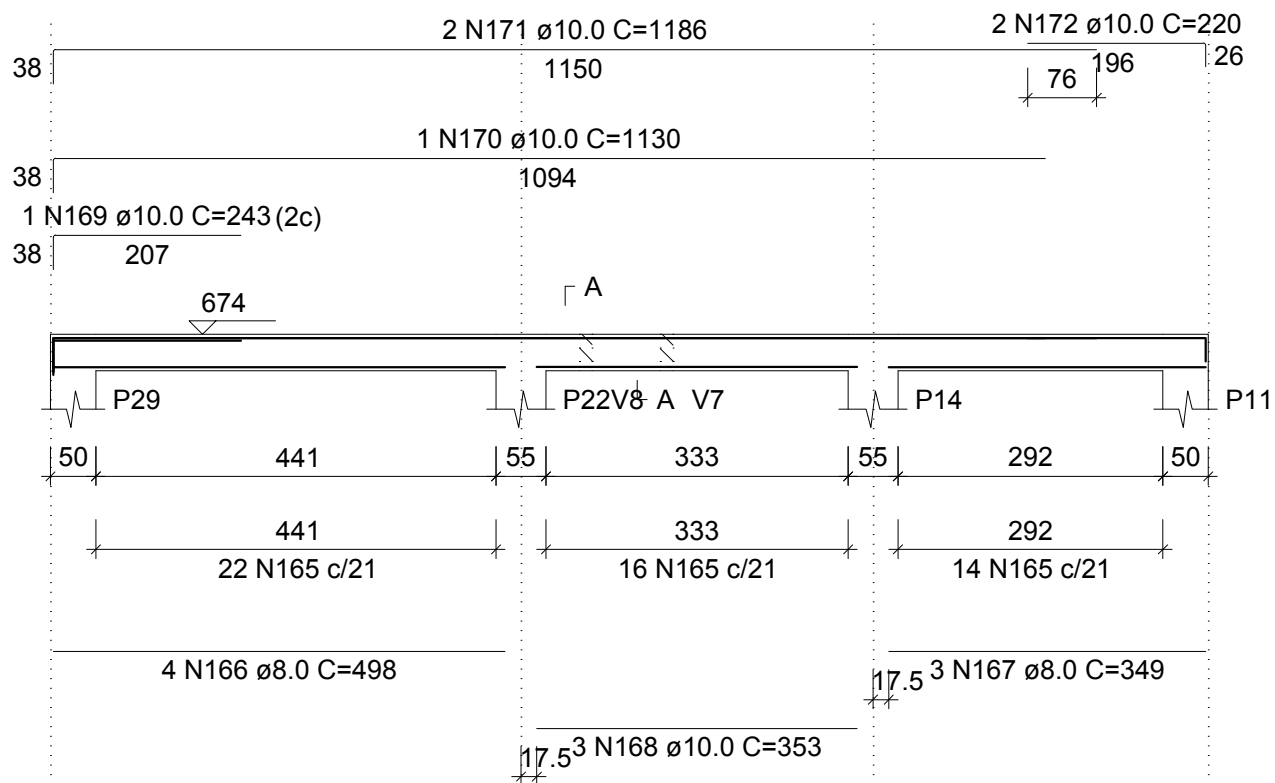


ESC 1:100



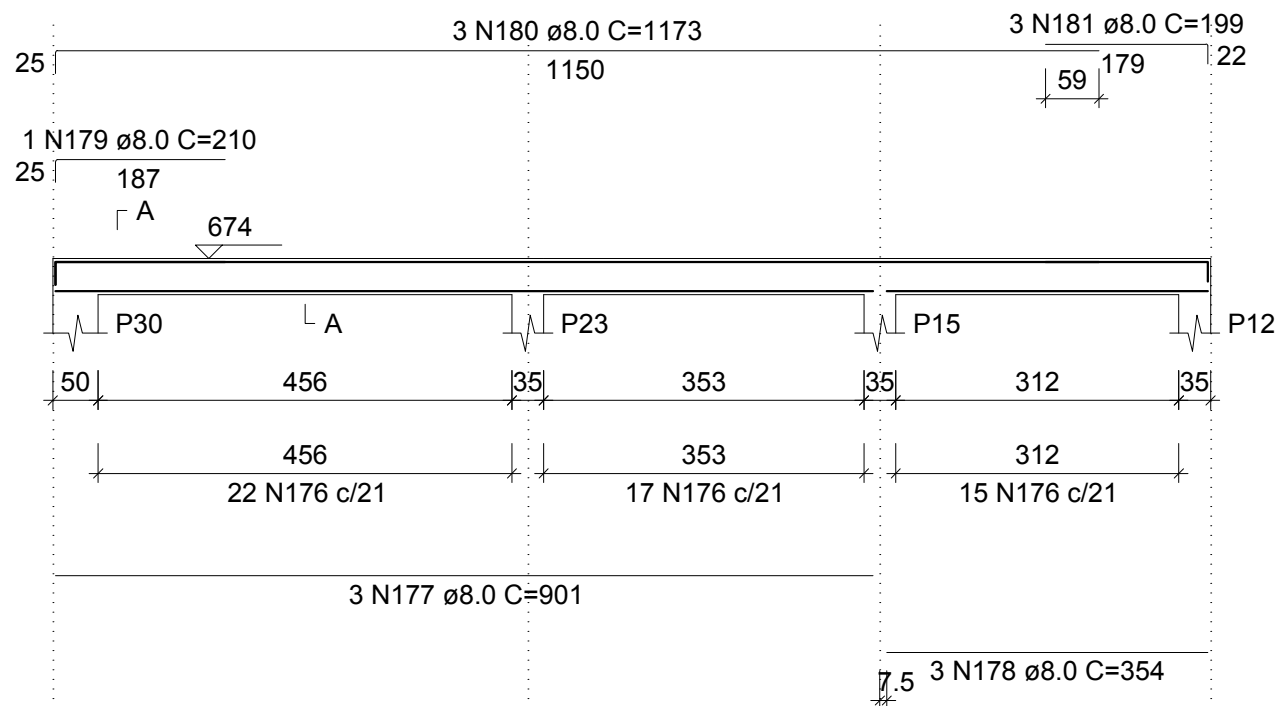
V20 (18 x 40)

ESC 1:100

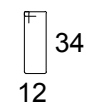
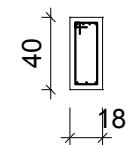


V22 (18 x 40)

ESC 1:100



SEÇÃO A-A
ESC 1:50



54 N176 \varnothing 5.0 C=103

